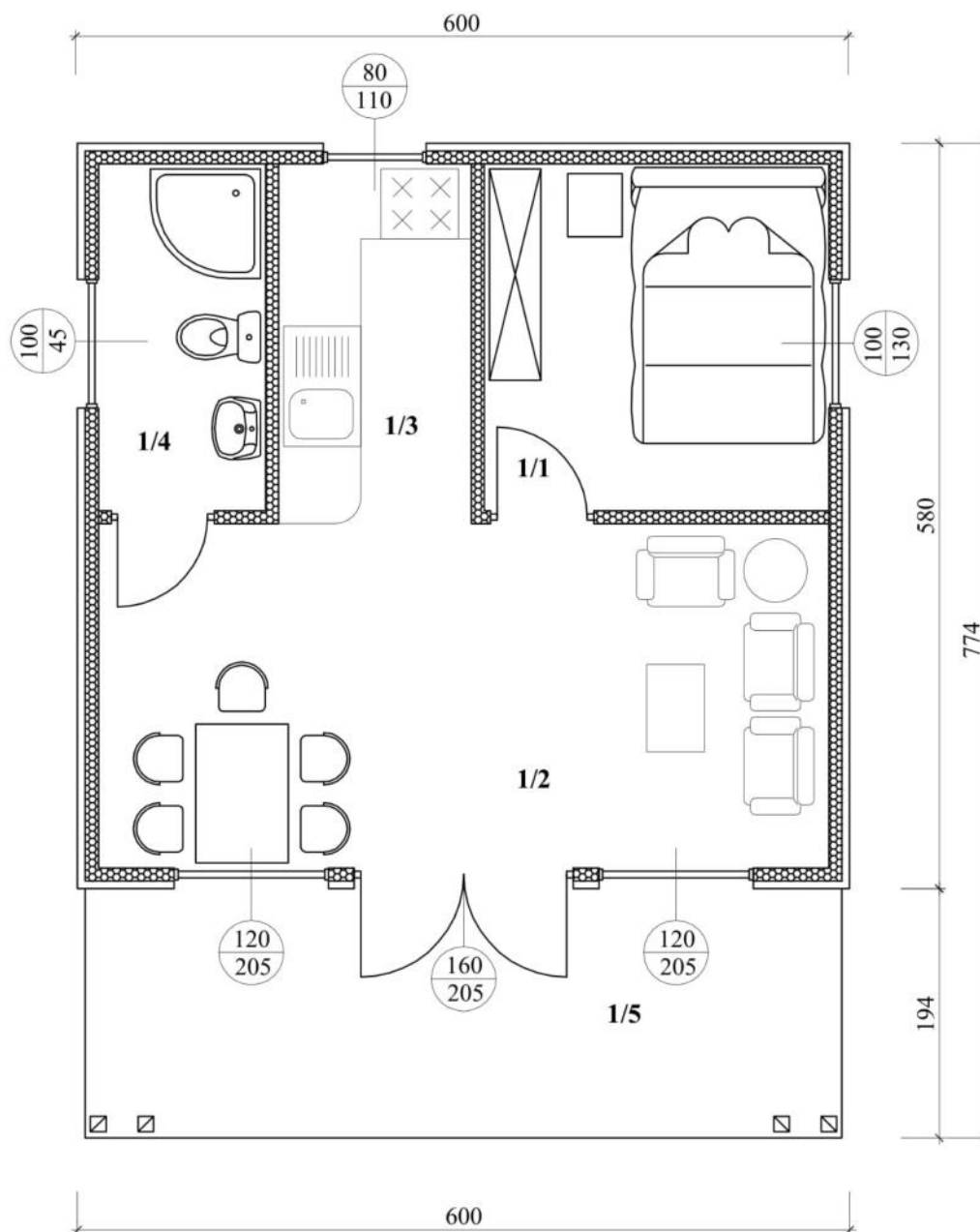


DANMAR 35A

dom letniskowy 6,0 x 5,8m

www.danmardomy.pl



| LP. | Nazwa pomieszczenia | Powierz. |
|-----|---------------------|---------------------------|
| 1/1 | sypialnia | 7.2 m ² |
| 1/2 | salonik | 15.2 m ² |
| 1/3 | aneks kuchenny | 4.2 m ² |
| 1/4 | łazienka | 3.5 m ² |
| | Razem : | 30.1 m² |
| 1/5 | taras | 11.4 m ² |

parter